



SOFAS & STUFF

WALBERSWICK SOFA COLLECTION

THE PERFECT FIT

Our bespoke furniture is lovingly handmade in Britain using traditional techniques. We're here to help you find the perfect sofa, sofa bed or chair for your home, and each piece can be upholstered in any fabric in the world.

If you need more inspiration, why not book a free design appointment? An expert from your local showroom will find out what you're looking for and answer any questions.



CAN WE HELP?

Our design consultants are on hand to offer style tips and product advice. Contact your local showroom, or call Head Office on 0808 178 3211.

www.sofasandstuff.com

V1.0



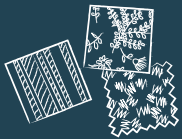
STYLE TIP

Mix different fabrics on more than just the scatter cushions.

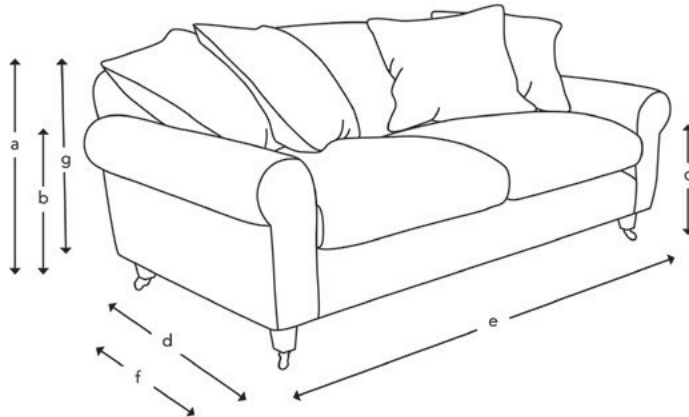
FREE FABRIC SAMPLES

Put simply, we're all about fabrics.

Choose from hundreds of free fabric samples in-store and online.



HOW THE WALBERSWICK MEASURES UP



Upholstery: Any fabric in the world

Cushions: Quallofil Blue Eco fibre seat and sprung back

Scatter cushions: Luxury duck feather

Frame construction: Hard wood, pinned, glued and screwed

Sizing: Handmade products may have a variation of up to 3cm

Depth: Also available at an overall depth of 98cm

Frame guarantee: Lifetime

Front cover: Etta's Bouquet Sunset Moss with scatters in Sussex Stripe Brick. Back cover: Linwood Omega Velvet Damson

Not sure whether your new furniture will fit? Speak to our experts to arrange an access check



4 Seater

3 Seater

2.5 Seater

Snuggler

Ladies Chair

(a) Total height	89 cm	89 cm	89 cm	89 cm	71 cm
(b) Arm height	66 cm	66 cm	66 cm	66 cm	66 cm
(c) Seat height	54.5 cm	54.5 cm	54.5 cm	54.5 cm	54.5 cm
(d) Depth	108 cm	108 cm	108 cm	108 cm	94 cm
(e) Width	224 cm	204 cm	184 cm	142 cm	94 cm
(f) Seat depth	75 cm	75 cm	75 cm	75 cm	61 cm
(g) Access height	73 cm	73 cm	73 cm	73 cm	55 cm
Number of scatters	4	4	4	2	-

Standard feet options:



PA1



PA2



PA3



PA4



PA5



PA18

All of our feet are available in a variety of stains and finishes. Please ask in-store for more information